

# PVC DWV

List Price Schedule PVC-126  
Effective January 2, 2026  
(Updated April 6, 2026)  
Supersedes Price Schedule PVC-225

Possession of this price list shall not be construed as an offer to sell the products listed.  
Charlotte Pipe and "You can't beat the system" are registered trademarks of Charlotte Pipe and Foundry Company.  
© 1967-2026 Charlotte Pipe and Foundry Company.



ASTM D 2665 &  
ASTM F 1866

## >> PVC Drain-Waste-Vent Fittings

For Non-Pressure Applications

Size	UPC# 611942-	No. Per Carton	No. Per Pallet	List Price Each	Size	UPC# 611942-	No. Per Carton	No. Per Pallet	List Price Each
------	-----------------	-------------------	-------------------	--------------------	------	-----------------	-------------------	-------------------	--------------------



**Part No. PVC 100  
Coupling  
(H x H)**

1¼	03188	100	8000	<b>\$68.10</b>
1½	03189	100	5600	<b>14.25</b>
2	03190	100	4900	<b>19.50</b>
3	03191	60	1080	<b>68.10</b>
4	03192	25	700	<b>115.75</b>
6	03193	15	180	<b>378.50</b>
8	03194	6	72	<b>629.00</b>
10	03195	-	-	*
12	03196	-	-	*
14 <sup>(F)</sup>	12190	-	-	*
16 <sup>(F)</sup>	12191	-	-	*



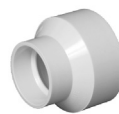
**Part No. PVC 101  
Female Adapter  
(FPT x H)**

1¼	03197	100	8000	<b>\$150.75</b>
1½	03198	100	5600	<b>27.00</b>
2	03199	100	4900	<b>45.95</b>
3	03200	25	875	<b>122.60</b>
4	03201	10	560	<b>159.30</b>
6	03202	10	180	<b>510.80</b>
8	11342	6	72	<b>1,168.40</b>
10 <sup>(F)</sup>	12192	-	-	*
12 <sup>(F)</sup>	12193	-	-	*



**Part No. PVC 101 X  
Female Adapter with Cleanout Plug  
(FPT x H)**

8	12269	5	80	<b>\$2,258.80</b>
10 <sup>(F)</sup>	12267	-	-	* <b>N</b>
12 <sup>(F)</sup>	12268	-	-	* <b>N</b>



**Part No. PVC 102  
Pipe Increaser-Reducer  
(H x H)**

1½x2	03203	25	3600	<b>\$43.25</b>
1½x3	03204	25	1400	<b>126.65</b>
2x3	03205	20	1600	<b>98.70</b>
2x4	03206	10	800	<b>193.35</b>
3x4	03207	20	1120	<b>206.75</b>
3x6	11073	5	140	<b>993.70</b>
4x6	11074	5	140	<b>803.95</b>
4x8	11343	2	70	<b>1,119.05</b>
4x10**	11344	-	-	*
4x12**	12184	-	-	*
4x14 <sup>(F)</sup>	12199	-	-	* <b>N</b>
4x16 <sup>(F)</sup>	12178	-	-	* <b>N</b>
6x8	11123	2	70	<b>899.70</b>
6x10	11124	-	-	*
6x12**	11345	-	-	*
6x14 <sup>(F)</sup>	12195	-	-	* <b>N</b>
6x16 <sup>(F)</sup>	12198	-	-	* <b>N</b>
8x10	10012	-	-	*
8x12	10014	-	-	*
8x14 <sup>(F)</sup>	12175	-	-	*
8x16 <sup>(F)</sup>	12179	-	-	* <b>N</b>
10x12	10015	-	-	*
10x14 <sup>(F)</sup>	12176	-	-	* <b>N</b>
10x16 <sup>(F)</sup>	12177	-	-	* <b>N</b>
12x14 <sup>(F)</sup>	12194	-	-	*
12x16 <sup>(F)</sup>	12196	-	-	*
14x16 <sup>(F)</sup>	12197	-	-	*

<sup>(F)</sup> Fabricated

\* For pricing of this item, please see current PVC Large-Diameter DWV fitting list price schedule.

\*\* Assembled from two molded components

**Note: N = non-stock item – contact customer service for availability.**

**You can't beat the system.®**

Size	UPC# 611942-	No. Per Carton	No. Per Pallet	List Price Each	Size	UPC# 611942-	No. Per Carton	No. Per Pallet	List Price Each
------	-----------------	-------------------	-------------------	--------------------	------	-----------------	-------------------	-------------------	--------------------



**Part No. PVC 103**  
**Trap Adapter - Male**  
(DWV SPG x Tubular SLIP)

1½x1¼	03208	100	8000	<b>\$58.55</b>
1½	03209	50	7200	<b>52.55</b>
2	03210	25	3600	<b>190.45</b>



**Part No. PVC 103 P**  
**Trap Adapter - Male**  
(DWV SPG x Tubular SLIP with Washer & Polyethylene Nut)

1½x1¼	03211	75	6000	<b>\$60.60</b>
1½	03212	50	5600	<b>55.80</b>
2 <sup>(PN)</sup>	03213	25	3600	<b>267.65</b>



**Part No. PVC 103 R**  
**Trap Adapter - Male with 1½" Plastic Nut and Washers to Fit 1½" and 1¼" Traps**  
(DWV SPG x Tubular SLIP with Plastic Nut)

1½	04139	50	5600	<b>\$59.65</b>
----	-------	----	------	----------------



**Part No. PVC 103 W**  
**Trap Adapter - Male**  
(DWV SPG x Tubular SLIP with Washer & Plastic Nut)

1½x1¼	13282	75	6000	<b>\$72.40</b>
1½	12479	50	5600	<b>57.50</b>
2	12544	25	3600	<b>303.10</b>



**Part No. PVC 103 X**  
**Trap Adapter - Male**  
(DWV SPG x Tubular SLIP with Washer & Chrome Nut)

1½x1¼	03214	100	8000	<b>\$75.70</b>
1½	03215	50	5600	<b>74.85</b>
2	03216	25	3600	<b>339.20</b>

<sup>(PN)</sup> with Plastic Nut



**Part No. PVC 104**  
**Trap Adapter - Female**  
(DWV H x Tubular SLIP)

1½x1¼	03220	50	5600	<b>\$57.40</b>
1½	03221	50	7200	<b>44.85</b>



**Part No. PVC 104 P**  
**Trap Adapter - Female**  
(DWV H x Tubular SLIP with Washer & Polyethylene Nut)

1¼	12537	50	5600	<b>\$65.20</b>
1½x1¼	03223	50	5600	<b>53.45</b>
1½	03224	50	5600	<b>53.10</b>



**Part No. PVC 104 R**  
**Trap Adapter - Female with 1½" Plastic Nut and Washers to Fit 1½" and 1¼" Traps**  
(DWV H x Tubular SLIP with Plastic Nut)

1½	04140	50	5600	<b>\$60.90</b>
----	-------	----	------	----------------



**Part No. PVC 104 W**  
**Trap Adapter - Female**  
(DWV H x Tubular SLIP with Washer & Plastic Nut)

1¼	13283	50	5600	<b>\$57.90</b>
1½x1¼	13284	50	5600	<b>55.55</b>
1½	12478	50	5600	<b>56.20</b>
2	12484	25	3600	<b>110.50</b>



**Part No. PVC 104 X**  
**Trap Adapter - Female**  
(DWV H x Tubular SLIP with Washer & Chrome Nut)

1¼	03226	50	5600	<b>\$93.25</b>
1½x1¼	03227	50	5600	<b>72.80</b>
1½	03228	50	5600	<b>75.10</b>
2	13285	25	3600	<b>189.70</b>

H = Hub  
SPG = Spigot  
SLIP = Slip  
MPT = Male Pipe Thread  
FPT = Female Pipe Thread

Size	UPC# 611942-	No. Per Carton	No. Per Pallet	List Price Each	Size	UPC# 611942-	No. Per Carton	No. Per Pallet	List Price Each
------	-----------------	-------------------	-------------------	--------------------	------	-----------------	-------------------	-------------------	--------------------



**Part No. PVC 105  
Fitting Cleanout Adapter**  
(SPG x FPT)

1¼	13286	50	7200	<b>\$54.20</b>
1½	03233	50	5600	<b>34.35</b>
2	03234	50	4000	<b>45.95</b>
3	03235	25	1225	<b>123.35</b>
4	03236	10	560	<b>202.80</b>
6	03237	10	280	<b>577.30</b>
8	12180	5	80	<b>2,135.55</b>
10 <sup>(F)</sup>	10175	-	-	*
12 <sup>(F)</sup>	10176	-	-	*



**Part No. PVC 105 X  
Fitting Cleanout Adapter with Cleanout  
Plug**  
(FPT x SPG)

1½	03239	50	4000	<b>\$59.85</b>
2	03240	50	2800	<b>74.65</b>
3	03241	25	875	<b>174.30</b>
4	03242	10	560	<b>278.25</b>
6	03243	10	180	<b>817.15</b>
8	12181	5	80	<b>4,355.80</b>
10 <sup>(F)</sup>	10178	-	-	*
12 <sup>(F)</sup>	10179	-	-	*



**Part No. PVC 106  
Cleanout Plug**  
(MPT)

1½	03251	50	7200	<b>\$25.50</b>
2	03252	50	7200	<b>28.70</b>
3	03253	25	2800	<b>50.95</b>
4	03254	20	1600	<b>75.50</b>
6	03255	10	800	<b>239.85</b>
8	10162	5	280	<b>1,090.45</b>
10	12185	-	-	*
12	12186	-	-	*

<sup>(F)</sup> Fabricated

\* For pricing of this item, please see current PVC Large-Diameter DWV fitting list price schedule.

\*\* Assembled from two molded components

**Note: N = non-stock item – contact customer service for availability.**



**Part No. PVC 106 A  
Cleanout Plug with O-Ring**  
(MPT)

2	15361	50	5600	<b>\$34.90</b>
3	15362	25	2000	<b>62.10</b>
4	15363	20	1600	<b>92.20</b>



**Part No. PVC 107  
Flush Bushing**  
(SPG x H)

1½x1¼	03261	100	14400	<b>\$56.85</b>
2x1¼	03262	50	7200	<b>68.00</b>
2x1½	03263	50	7200	<b>24.85</b>
3x1½	03264	25	2000	<b>118.65</b>
3x2	03265	25	2000	<b>62.65</b>
4x2	03266	30	1470	<b>206.30</b>
4x3	03267	30	1470	<b>106.65</b>
6x4	03268	10	490	<b>530.10</b>
8x4	10618	1	112	<b>956.30</b>
8x6	03269	1	112	<b>1,037.70</b>
10x4**	12187	-	-	*
10x6**	11346	-	-	*
10x8	10180	-	-	*
12x4**	11347	-	-	*
12x6**	10634	-	-	*
12x8	10181	-	-	*
12x10	10182	-	-	*



**Part No. PVC 107  
Concentric Reducer Bushing**  
(SPG x H)

14x4 <sup>(F)</sup>	12208	-	-	*	<b>N</b>
14x6 <sup>(F)</sup>	12209	-	-	*	<b>N</b>
14x8 <sup>(F)</sup>	12210	-	-	*	<b>N</b>
14x10 <sup>(F)</sup>	12204	-	-	*	
14x12 <sup>(F)</sup>	12205	-	-	*	
16x4 <sup>(F)</sup>	12212	-	-	*	<b>N</b>
16x6 <sup>(F)</sup>	12206	-	-	*	
16x8 <sup>(F)</sup>	12207	-	-	*	
16x10 <sup>(F)</sup>	12182	-	-	*	
16x12 <sup>(F)</sup>	12183	-	-	*	
16x14 <sup>(F)</sup>	12211	-	-	*	<b>N</b>

Size	UPC# 611942-	No. Per Carton	No. Per Pallet	List Price Each	Size	UPC# 611942-	No. Per Carton	No. Per Pallet	List Price Each
------	-----------------	-------------------	-------------------	--------------------	------	-----------------	-------------------	-------------------	--------------------



**Part No. PVC 108  
Flush Bushing (Cleanout Adapter)**  
(SPG x FPT)

2x1½	03274	50	7200	<b>\$153.00</b>
------	-------	----	------	-----------------



**Part No. PVC 108 X  
Flush Bushing (Cleanout Adapter)  
with Plug**  
(SPG x FPT)

10x8	10234	-	-	*
12x8	10235	-	-	*



**Part No. PVC 109  
Male Adapter**  
(Will not accept a tail piece)  
Octagon shoulders for tightening purposes.  
(MPT x H)

1¼	03285	50	7200	<b>\$85.10</b>
1¼x1½‡	03287	25	3600	<b>39.10</b>
1½	03286	50	5600	<b>27.10</b>
2	03288	50	5600	<b>36.30</b>
3	03289	25	1400	<b>101.50</b>
4	03290	25	875	<b>229.85</b>



**Part No. PVC 110  
Flush Cleanout Plug**  
(MPT)

2	03291	25	7200	<b>\$92.50</b>
3	03292	50	5600	<b>107.60</b>
4	03293	25	2800	<b>125.80</b>



**Part No. PVC 110 A  
Flush Cleanout Plug with O-Ring**  
(MPT)

2	15364	20	5760	<b>\$112.85</b>
3	15365	20	2880	<b>131.25</b>
4	15366	25	2000	<b>153.45</b>



**Part No. PVC 110 B  
Flush Cleanout Plug with  
Threaded Brass Insert**  
(MPT)

2	15077	25	7200	<b>\$115.30</b>
3	15078	50	4000	<b>133.60</b>
4	15079	25	2800	<b>176.10</b>



**Part No. PVC 111  
Male Fitting Adapter**  
(SPG x MPT)

1½	03298	50	7200	<b>\$117.00</b>
1½x1¼	12554	100	8000	<b>106.95</b>
2	03299	25	3600	<b>130.50</b>
3	13345	25	1225	<b>238.95</b>



**Part No. PVC 113  
Tray Adapter**  
(H)

1½	13465	10	2160	<b>\$78.70</b>
----	-------	----	------	----------------



**Part No. PVC 115  
Adapter Coupling**  
(SDR 35 H x DWV H)

8 <sup>(F)</sup>	12270	5	80	<b>\$2,294.85</b>
10 <sup>(F)</sup>	12271	-	-*	<b>N</b>
10x8 <sup>(F)</sup>	12272	-	-*	<b>N</b>
12 <sup>(F)</sup>	12273	-	-*	<b>N</b>

‡ 1¼" side is threaded.

<sup>(F)</sup> Fabricated

\* For pricing of this item, please see current PVC Large-Diameter DWV fitting list price schedule.

**Note: N = non-stock item – contact customer service for availability.**

Size	UPC# 611942-	No. Per Carton	No. Per Pallet	List Price Each	Size	UPC# 611942-	No. Per Carton	No. Per Pallet	List Price Each
------	-----------------	-------------------	-------------------	--------------------	------	-----------------	-------------------	-------------------	--------------------



**Part No. PVC 116  
Cap  
(SOCKET)**

1½	03301	10	2880	<b>\$57.40</b>
2	03302	5	1800	<b>95.70</b>
3	03303	10	1440	<b>160.05</b>
4	03304	6	672	<b>228.25</b>
6	03305	5	175	<b>576.65</b>
8	10252	3	63	<b>1,550.20</b>
10	11121	-	-	*
12	11122	-	-	*
14 <sup>(F)</sup>	12214	-	-	*
16 <sup>(F)</sup>	12213	-	-	*



**Part No. PVC 117  
Adapter Coupling  
(Adapts S&D Spigot to DWV Spigot)  
(H x H)**

3x3**	13462	10	800	<b>\$386.95</b>
4x3	03307	20	1120	<b>216.15</b>
4x4	03308	10	560	<b>224.30</b>



**Part No. PVC 117 X  
Adapter Bushing  
(Adapts S&D Hub to DWV Spigot)  
(SPG x H)**

4x3	13349	20	700	<b>\$245.80</b>
-----	-------	----	-----	-----------------



**Part No. PVC 118  
Adapter Bushing  
(Adapts DWV Hub to S&D Spigot)  
(DWV SPG x HUB)**

3	03309	20	2240	<b>\$195.70</b>
4	03310	10	1440	<b>85.45</b>



**Part No. PVC 119  
No-Hub Adapter  
(SPG x H)  
(Adapts Cast Iron NH Spigot to DWV Spigot)**

1½	03311	25	3600	<b>\$187.25</b>
2	03312	25	2800	<b>74.85</b>
2x1½	03313	25	3600	<b>261.25</b>
3	03314	20	1600	<b>108.80</b>
4	03316	15	840	<b>139.50</b>
4x3	03315	10	800	<b>268.30</b>



**Part No. PVC 120  
Adapter Bushing  
(DWV SPG x SDR 35 H)**

8 <sup>(F)</sup>	12274	5	80	<b>\$2,390.70</b>
10 <sup>(F)</sup>	12275	-	-	* <b>N</b>
12 <sup>(F)</sup>	12276	-	-	* <b>N</b>



**Part No. PVC 122  
Spigot Adapter, Cast Iron  
(H x H)  
(Adapts Cast Iron Spigot to DWV Spigot)**

2x2	03317	10	1440	<b>\$279.85</b>
3x3	03318	10	560	<b>476.10</b>
4x4	03319	15	420	<b>419.25</b>



**Part No. PVC 123  
Hub Adapter, Cast Iron  
(H x SPG)  
(Adapts DWV Spigot to Cast Iron Hub)**

2x2 <sup>(P)</sup>	03320	20	1600	<b>\$141.85</b>
3x3 <sup>(P)</sup>	03321	20	700	<b>269.05</b>
4x4 <sup>(P)</sup>	03322	20	360	<b>404.70</b>

- (F) Fabricated
- (P) Plain End: Joint can be made with compression gasket only.
- \* For pricing of this item, please see current PVC Large-Diameter DWV fitting list price schedule.
- \*\* Assembled from two molded components

**Note: N = non-stock item – contact customer service for availability.**

Size	UPC# 611942-	No. Per Carton	No. Per Pallet	List Price Each	Size	UPC# 611942-	No. Per Carton	No. Per Pallet	List Price Each
------	-----------------	-------------------	-------------------	--------------------	------	-----------------	-------------------	-------------------	--------------------



**Part No. PVC 123 R**  
**Hub Adapter, Cast Iron, Increaser**  
(H x SPG)  
(Adapts DWV Spigot to Cast Iron Hub)

1½x2 <sup>(P)</sup>	03323	10	1440	<b>\$269.25</b>
3x4 <sup>(P)</sup>	03326	10	490	<b>306.75</b>



**Part No. PVC 130**  
**Repair Coupling**  
(H x H)

1½	03337	25	3600	<b>\$78.25</b>
2	03338	25	3600	<b>54.50</b>
3	03339	10	1120	<b>137.90</b>
4	03340	5	560	<b>265.20</b>
6	03341	5	175	<b>1,185.75</b>
8 <sup>(F)</sup>	12217	5	80	<b>2,209.75</b>
10 <sup>(F)</sup>	12215	-	-*	<b>N</b>
12 <sup>(F)</sup>	12216	-	-*	<b>N</b>



**Part No. PVC 131**  
**Test Cap**

1½	05285	100	54000	<b>\$32.00</b>
2	05287	100	28800	<b>33.75</b>
3	05288	50	10800	<b>34.90</b>
4	05289	50	9600	<b>43.70</b>



**Part No. PVC 132**  
**Outside Diameter Test Cap**

1½	10893	100	21600	<b>\$30.10</b>
2	10894	100	14400	<b>28.25</b>
3	10895	50	7200	<b>37.25</b>
4	10896	25	3600	<b>46.35</b>

- <sup>(F)</sup> Fabricated  
<sup>(P)</sup> Plain End: Joint can be made with compression gasket only.  
<sup>†</sup> Not a sanitary pattern  
<sup>\*</sup> For pricing of this item, please see current PVC Large-Diameter DWV fitting list price schedule.

**Note: N = non-stock item – contact customer service for availability.**



**Part No. PVC 300**  
**1/4 Bend**  
(H x H)

1¼	03354	100	3500	<b>\$105.45</b>
1½	03355	100	2800	<b>30.20</b>
2	03356	50	1400	<b>47.75</b>
3	03357	25	450	<b>140.35</b>
4	03358	10	180	<b>277.10</b>
6	03359	5	80	<b>970.55</b>
8	03360	1	28	<b>1,254.05</b>
10	10167	-	-*	
12	10168	-	-*	
14 <sup>(F)</sup>	12218	-	-*	
16 <sup>(F)</sup>	12219	-	-*	



**Part No. PVC 300 A**  
**Vent 1/4 Bend**  
(H x H)

8 <sup>†</sup>	12188	2	32	<b>\$2,648.40</b>
10 <sup>†</sup>	10019	-	-	<b>*</b>
12 <sup>†</sup>	10025	-	-	<b>*</b>



**Part No. PVC 300 R**  
**1/4 Bend, Reducing**  
(H x H)

2x1½	04196	10	1440	<b>\$174.00</b>
------	-------	----	------	-----------------



**Part No. PVC 300 S**  
**1/4 Bend with Side Inlet**  
(H x H)

3x3x1½	03361	10	490	<b>\$407.70</b>
3x3x2	03362	10	350	<b>274.20</b>



**Part No. PVC 301**  
**Vent 1/4 Bend, Street**  
(H x SPG)

8 <sup>(F)</sup>	12279	2	24	<b>\$3,939.40</b>
10 <sup>(F)</sup>	12277	-	-*	<b>N</b>
12 <sup>(F)</sup>	12278	-	-*	<b>N</b>

Size	UPC# 611942-	No. Per Carton	No. Per Pallet	List Price Each	Size	UPC# 611942-	No. Per Carton	No. Per Pallet	List Price Each
------	-----------------	-------------------	-------------------	--------------------	------	-----------------	-------------------	-------------------	--------------------



**Part No. PVC 302**  
**1/4 Bend, Street**  
(SPG x H)

1¼	03369	35	3920	<b>\$172.15</b>
1½	03370	100	3500	<b>39.10</b>
2	03371	50	1750	<b>60.15</b>
3	03372	15	420	<b>167.45</b>
4	03373	10	180	<b>280.10</b>
6	03374	5	80	<b>1,251.95</b>
8	11348	1	28	<b>2,428.80</b>
10 <sup>(F)</sup>	12220	-	-	*
12 <sup>(F)</sup>	12221	-	-	*
14 <sup>(F)</sup>	12222	-	-	* <b>N</b>
16 <sup>(F)</sup>	12223	-	-	* <b>N</b>



**Part No. PVC 303**  
**1/4 Bend with Low Heel Inlet**  
(ALL HUB)

3x3x1½	03375	25	400	<b>\$301.70</b>
3x3x2	03376	25	400	<b>241.65</b>
4x4x2	03377	15	180	<b>477.20</b>



**Part No. PVC 304**  
**Long Sweep 1/4 Bend**  
(H x H)

1½	03378	50	1750	<b>\$70.15</b>
2	03379	20	980	<b>78.35</b>
3	03380	10	350	<b>180.40</b>
4	03381	5	175	<b>340.45</b>
6	11349	5	60	<b>1,327.40</b>



**Part No. PVC 305**  
**Long Sweep 1/4 Bend**  
**with High Heel Inlet**  
(ALL HUB)

3x3x2	03383	25	300	<b>\$1,319.40</b>
-------	-------	----	-----	-------------------



**Part No. PVC 307**  
**Long Sweep 1/4 Bend with Low Heel**  
**Inlet**  
(ALL HUB)

3x3x2	03385	25	300	<b>\$541.20</b>
-------	-------	----	-----	-----------------



**Part No. PVC 309**  
**Long Sweep 1/4 Bend, Street**  
(H x SPG)

1½	03386	50	2450	<b>\$107.60</b>
2	03387	20	980	<b>128.90</b>
3	03388	20	360	<b>320.75</b>
4	03389	5	175	<b>494.10</b>



**Part No. PVC 310**  
**1/4 Bend, Street with Low Heel Inlet**  
(H x SPG x H)

3x3x2	04153	15	420	<b>\$691.35</b>
-------	-------	----	-----	-----------------



**Part No. PVC 311**  
**Long Sweep 1/4 Bend with Side Inlet**  
(ALL HUB)

3x3x2	03391	25	300	<b>\$803.45</b>
-------	-------	----	-----	-----------------



**Part No. PVC 319**  
**1/6 Bend**  
(H x H)

1½	03392	40	3200	<b>\$70.55</b>
2	03393	25	1400	<b>82.10</b>
3	03394	20	560	<b>302.90</b>
4	03395	10	280	<b>403.85</b>

<sup>(F)</sup> Fabricated

\* For pricing of this item, please see current PVC Large-Diameter DWV fitting list price schedule.

**Note: N = non-stock item – contact customer service for availability.**

Size	UPC# 611942-	No. Per Carton	No. Per Pallet	List Price Each	Size	UPC# 611942-	No. Per Carton	No. Per Pallet	List Price Each
------	-----------------	-------------------	-------------------	--------------------	------	-----------------	-------------------	-------------------	--------------------



**Part No. PVC 320**  
**1/6 Bend, Street**  
(H x SPG)

1½	03396	40	3200	<b>\$127.95</b>
2	03397	25	2000	<b>164.80</b>
3	03398	20	700	<b>355.45</b>
4	03399	10	280	<b>552.80</b>



**Part No. PVC 321**  
**1/8 Bend**  
(H x H)

1¼	03400	50	4000	<b>\$71.95</b>
1½	03401	100	3500	<b>29.65</b>
2	03402	50	1750	<b>44.20</b>
3	03403	20	560	<b>125.80</b>
4	03404	10	280	<b>230.10</b>
6	03405	3	84	<b>850.55</b>
8	03406	1	28	<b>1,113.60</b>
10	10020	-	-	*
12	10026	-	-	*
14 <sup>(F)</sup>	12224	-	-	*
16 <sup>(F)</sup>	12225	-	-	*



**Part No. PVC 323**  
**1/8 Bend, Street**  
(SPG x H)

1¼	03407	40	4480	<b>\$98.50</b>
1½	03408	100	3500	<b>28.35</b>
2	03409	50	1750	<b>45.20</b>
3	03410	20	700	<b>119.15</b>
4	03411	10	280	<b>204.20</b>
6	03412	3	84	<b>1,007.60</b>
8	03413	1	28	<b>1,208.55</b>
10	10142	-	-	*
12	10143	-	-	*
14 <sup>(F)</sup>	12227	-	-	*
16 <sup>(F)</sup>	12226	-	-	*



**Part No. PVC 324**  
**1/16 Bend**  
(H x H)

1½	03416	50	4000	<b>\$42.10</b>
2	03417	25	2000	<b>49.90</b>
3	03418	20	700	<b>123.00</b>
4	03419	15	420	<b>194.45</b>
6	03420	3	84	<b>1,122.90</b>
8	11350	2	56	<b>1,858.80</b>
10	11351	-	-	*
12	11352	-	-	*
14 <sup>(F)</sup>	12228	-	-	*
16 <sup>(F)</sup>	12229	-	-	*



**Part No. PVC 326**  
**1/16 Bend, Street**  
(SPG x H)

1½	03421	50	4000	<b>\$114.05</b>
2	03422	20	2240	<b>122.25</b>
3	03423	20	700	<b>190.45</b>
4	03424	15	420	<b>276.45</b>
6	03425	4	112	<b>1,087.90</b>
8	12234	2	56	<b>4,609.40</b>
10 <sup>(F)</sup>	12230	-	-	*
12 <sup>(F)</sup>	12231	-	-	*
14 <sup>(F)</sup>	12232	-	-	*
16 <sup>(F)</sup>	12233	-	-	*



**Part No. PVC 327**  
**Double 1/4 Bend**  
(ALL HUB)

1½	03426	20	1600	<b>\$119.15</b>
2	03427	25	875	<b>162.55</b>
2x1½x1½	03428	25	1400	<b>149.70</b>
3	03429	10	280	<b>424.85</b>

<sup>(F)</sup> Fabricated  
\* For pricing of this item, please see current PVC Large-Diameter DWV fitting list price schedule.

**Note: N = non-stock item – contact customer service for availability.**

Size	UPC# 611942-	No. Per Carton	No. Per Pallet	List Price Each	Size	UPC# 611942-	No. Per Carton	No. Per Pallet	List Price Each
------	-----------------	-------------------	-------------------	--------------------	------	-----------------	-------------------	-------------------	--------------------



**Part No. PVC 328**  
**1/32 Bend**  
(H x H)

8 <sup>(F)</sup>	12237	2	32	\$4,885.85
10 <sup>(F)</sup>	12235	-	-	* <b>N</b>
12 <sup>(F)</sup>	12236	-	-	* <b>N</b>



**Part No. PVC 329**  
**Closet Bend, Reducing**  
(H x H)

3x4	03430	10	280	\$225.70
-----	-------	----	-----	----------



**Part No. PVC 330**  
**Closet Bend, Reducing**  
(H x SPG)

3x4	03431	10	280	\$439.50
-----	-------	----	-----	----------



**Part No. PVC 330 X**  
**Closet Bend, Reducing with Test Cap**  
(H x SPG)

3x4	03432	10	280	\$563.50
-----	-------	----	-----	----------



**Part No. PVC 331**  
**Vent Ell**  
(H x H)

1½	03434	20	2880	\$62.40
2	03435	30	1680	80.85
3	03436	25	700	209.55



**Part No. PVC 333**  
**Vent Ell, Street**  
(H x SPG)

1½	03441	25	2800	\$62.85
2	03442	20	1600	93.60
3	03443	5	560	250.85

- (F) Fabricated  
† Not a sanitary pattern  
\* For pricing of this item, please see current PVC Large-Diameter DWV fitting list price schedule.  
\*\* Assembled from two molded components

**Note: N = non-stock item – contact customer service for availability.**



**Part No. PVC 400**  
**Sanitary Tee**  
(ALL HUB)

1¼	03462	25	2000	\$113.05
1½	03463	100	1800	52.90
2	03464	35	980	77.75
3	03465	30	360	204.60
4	03466	5	140	373.55
6	03467	6	72	1,499.90
8	03468	2	24	3,323.45



**Part No. PVC 400**  
**Sanitary Tee**  
(ALL HUB)

10 <sup>(F)</sup>	13837	-	-	*
12 <sup>(F)</sup>	13838	-	-	*



**Part No. PVC 400 A**  
**Straight Tee**  
(ALL HUB)

8 <sup>†</sup>	12189	2	24	\$3,513.40
10 <sup>†</sup>	10018	-	-	*
12 <sup>†</sup>	10024	-	-	*
14 <sup>†(F)</sup>	12238	-	-	*
16 <sup>†(F)</sup>	12239	-	-	*



**Part No. PVC 401**  
**Sanitary Tee, Reducing**  
(ALL HUB)

2x1½x1½	03469	25	1225	\$68.50
2x1½x2	03470	25	875	82.55
2x2x1½	03471	50	900	68.85
3x3x1½	03472	20	560	148.50
3x3x2	03473	10	490	154.20
4x4x1½	03474	5	280	391.65
4x4x2	03475	10	280	321.50
4x4x3	03476	10	180	436.85
6x6x4	03477	6	72	1,450.55
8x8x4**	11357	2	24	4,567.15
8x8x6**	11358	2	24	4,986.60

Size	UPC# 611942-	No. Per Carton	No. Per Pallet	List Price Each	Size	UPC# 611942-	No. Per Carton	No. Per Pallet	List Price Each
------	-----------------	-------------------	-------------------	--------------------	------	-----------------	-------------------	-------------------	--------------------



**Part No. PVC 401 A**  
**Straight Tee, Reducing**  
(ALL HUB)

8x8x4†**	12253	2	24	<b>\$4,466.80</b>
8x8x6†**	12241	2	24	<b>4,669.70</b>
10x10x4†**	11353	-	-	*
10x10x6†**	11354	-	-	*
10x10x8†	10021	-	-	*
12x12x4†***	12256	-	-	* <b>N</b>
12x12x6†**	11355	-	-	*
12x12x8†	10028	-	-	*
12x12x10†	10027	-	-	*
14x14x4†(F)	12244	-	-	*
14x14x6†(F)	12245	-	-	*
14x14x8†(F)	12246	-	-	*
14x14x10†(F)	12242	-	-	* <b>N</b>
14x14x12†(F)	12243	-	-	*
16x16x4†(F)	12250	-	-	*
16x16x6†(F)	12251	-	-	*
16x16x8†(F)	12252	-	-	*
16x16x10†(F)	12247	-	-	* <b>N</b>
16x16x12†(F)	12248	-	-	*



**Part No. PVC 403**  
**Sanitary Tee, Street**  
(SPG x H x H)

1½	03479	20	1600	<b>\$158.25</b>
2	03480	25	875	<b>153.55</b>
3	03481	30	360	<b>255.80</b>
4	03482	10	160	<b>646.15</b>



**Part No. PVC 404**  
**Sanitary Tee, Street, Reducing**  
(SPG x H x H)

2x1½x1½	14581	25	1225	<b>\$141.55</b>
2x2x1½	03484	50	1400	<b>135.20</b>
3x3x1½	03485	10	490	<b>294.35</b>
3x3x2	03486	20	560	<b>252.80</b>
4x4x2	03487	5	280	<b>480.30</b>

- (F) Fabricated
- † Not a sanitary pattern
- \* For pricing of this item, please see current PVC Large-Diameter DWV fitting list price schedule.
- \*\* Assembled from two molded components

**Note: N = non-stock item – contact customer service for availability.**



**Part No. PVC 410**  
**Tee Cross**  
(ALL HUB)

6 <sup>(F)</sup>	12595	2	24	<b>\$4,628.25</b>
6x4 <sup>(F)</sup>	12596	3	36	<b>4,096.05</b>
8 <sup>(F)</sup>	12254	2	8	<b>7,470.75</b>
8x4 <sup>(F)</sup>	12265	2	24	<b>5,573.00</b>
8x6 <sup>(F)</sup>	12266	1	16	<b>6,036.10</b>
10 <sup>(F)</sup>	12255	-	-	* <b>N</b>
10x4 <sup>(F)</sup>	12257	-	-	* <b>N</b>
10x6 <sup>(F)</sup>	12258	-	-	* <b>N</b>
10x8 <sup>(F)</sup>	12259	-	-	* <b>N</b>
12 <sup>(F)</sup>	12260	-	-	* <b>N</b>
12x4 <sup>(F)</sup>	12262	-	-	*
12x6 <sup>(F)</sup>	12263	-	-	* <b>N</b>
12x8 <sup>(F)</sup>	12264	-	-	* <b>N</b>
12x10 <sup>(F)</sup>	12261	-	-	* <b>N</b>



**Part No. PVC 416**  
**Sanitary Tee with Left Side Inlet**  
(ALL HUB)

3x3x3x1½	03500	10	280	<b>\$576.65</b>
3x3x3x2	03501	10	280	<b>398.20</b>
4x4x4x2	03502	5	140	<b>927.60</b>



**Part No. PVC 417**  
**Sanitary Tee with Right Side Inlet**  
(ALL HUB)

3x3x3x1½	03503	10	280	<b>\$576.65</b>
3x3x3x2	03504	10	280	<b>398.20</b>
4x4x4x2	03505	5	140	<b>927.60</b>



**Part No. PVC 418**  
**Sanitary Tee with Right & Left Side Inlets**  
(ALL HUB)

3x3x3x2x2	03507	5	245	<b>\$583.85</b>
4x4x4x2x2	03508	5	90	<b>1,215.50</b>

Size	UPC# 611942-	No. Per Carton	No. Per Pallet	List Price Each	Size	UPC# 611942-	No. Per Carton	No. Per Pallet	List Price Each
------	-----------------	-------------------	-------------------	--------------------	------	-----------------	-------------------	-------------------	--------------------



**Part No. PVC 428**  
**Double Sanitary Tee**  
(ALL HUB)

1½	03509	25	1225	<b>\$116.25</b>
2	03510	20	700	<b>157.05</b>
3	03511	20	240	<b>439.30</b>
4	03512	4	112	<b>706.65</b>



**Part No. PVC 429**  
**Double Sanitary Tee, Reducing**  
(ALL HUB)

2x2x1½x1½	03513	20	700	<b>\$123.35</b>
3x3x1½x1½	03514	20	360	<b>286.20</b>
3x3x2x2	03516	10	350	<b>311.05</b>
4x4x2x2	03518	5	245	<b>584.60</b>
4x4x3x3	03519	5	140	<b>606.55</b>



**Part No. PVC 431**  
**Double Sanitary Tee, Street, Reducing**  
(SPG x H x H x H)

3x3x1½x1½	03521	10	490	<b>\$1,064.45</b>
-----------	-------	----	-----	-------------------



**Part No. PVC 438**  
**Double Sanitary Tee with Side Inlet**  
(ALL HUB)

3x3x3x3x2	03523	10	180	<b>\$646.70</b>
4x4x4x4x2	03524	10	120	<b>1,421.65</b>



**Part No. PVC 439**  
**Double Sanitary Tee with Right & Left**  
**Side Inlets**  
(ALL HUB)

3x3x3x3x2x2	03527	10	120	<b>\$1,003.85</b>
4x4x4x4x2x2	03528	5	80	<b>1,630.75</b>



**Part No. PVC 441**  
**Vent Tee**  
(ALL HUB)

1½	03530	25	2000	<b>\$224.65</b>
2	03531	25	1225	<b>168.20</b>
3	03532	10	490	<b>506.30</b>
4	03533	5	245	<b>724.40</b>



**Part No. PVC 444 A**  
**Cleanout Tee with O-Ring Plug**  
(H x H x FPT)

2	15367	10	800	<b>\$189.85</b>
3	15368	10	490	<b>362.55</b>
4	15369	5	175	<b>626.55</b>



**Part No. PVC 444 X**  
**Cleanout Tee with Cleanout Plug**  
(H x H x FPT)

1½	03539	10	1440	<b>\$134.25</b>
2	03540	10	800	<b>155.65</b>
3	03541	10	490	<b>297.45</b>
4	03542	5	175	<b>513.70</b>
6	10216	5	60	<b>2,454.95</b>
6x6x4**	11360	2	36	<b>3,978.35</b>
8	10217	2	24	<b>4,852.70</b>
8x8x4 <sup>(F)</sup>	12293	2	24	<b>4,267.90</b>
8x8x6***	11361	2	24	<b>4,153.75</b>
10	12281	-	-	*
10x10x4 <sup>(F)</sup>	12282	-	-	* <b>N</b>
10x10x6 <sup>(F)</sup>	12280	-	-	*
10x10x8	10164	-	-	*
12	12283	-	-	*
12x12x4 <sup>(F)</sup>	12285	-	-	* <b>N</b>
12x12x6**	11356	-	-	*
12x12x8	10165	-	-	*
12x12x10 <sup>(F)</sup>	12284	-	-	* <b>N</b>

<sup>(F)</sup> Fabricated

\* For pricing of this item, please see current PVC Large-Diameter DWV fitting list price schedule.

\*\* Assembled from two molded components

\*\*\* Assembled from three molded components

**Note: N = non-stock item – contact customer service for availability.**

Size	UPC# 611942-	No. Per Carton	No. Per Pallet	List Price Each	Size	UPC# 611942-	No. Per Carton	No. Per Pallet	List Price Each
------	-----------------	-------------------	-------------------	--------------------	------	-----------------	-------------------	-------------------	--------------------



**Part No. PVC 445**  
**Flush Cleanout Tee**  
(H x H x FPT)

1½	03543	20	2240	<b>\$108.80</b>
2	03544	20	980	<b>127.00</b>
3	03545	10	490	<b>246.35</b>
4	03546	10	180	<b>438.35</b>
6	10214	5	60	<b>2,215.10</b>
8	10215	2	24	<b>3,762.40</b>
10	12286	-	-	*
10x10x6 <sup>(F)</sup>	12289	-	-	*
12	12287	-	-	*



**Part No. PVC 445 A**  
**Flush Cleanout Tee with O-Ring Plug**  
(H x H x FPT)

2	15370	10	800	<b>\$267.65</b>
3	15371	10	490	<b>431.70</b>
4	15372	5	245	<b>687.70</b>



**Part No. PVC 445 X**  
**Flush Cleanout Tee with Cleanout Plug**  
(H x H x FPT)

2	03547	10	800	<b>\$219.60</b>
3	03548	10	490	<b>353.95</b>
4	03549	5	245	<b>563.80</b>



**Part No. PVC 447**  
**Horizontal Twin Tee**  
(ALL HUB)

3x3x1½x1½	03556	5	400	<b>\$856.00</b>
-----------	-------	---	-----	-----------------



**Part No. PVC 448**  
**Two-Way Cleanout**  
(ALL HUB)

3	03557	10	180	<b>\$470.75</b>
4	03558	5	90	<b>609.30</b>
6	16591	3	12	<b>5,052.15</b>



**Part No. PVC 449**  
**Sanitary Tee with 2" Left Hand**  
**Sanitary Inlet on Center**  
(ALL HUB)

2	03559	20	560	<b>\$424.85</b>
---	-------	----	-----	-----------------



**Part No. PVC 500**  
**Double Fixture Fitting**  
(ALL HUB)

2	04155	10	350	<b>\$267.45</b>
2x1½x1½x1½	04148	20	700	<b>329.10</b>
2x2x1½x1½	04896	20	700	<b>307.60</b>
3	04156	10	160	<b>577.40</b>



**Part No. PVC 501**  
**Combination Wye and 1/8 Bend**  
**(One Piece)**  
(ALL HUB)

1½	03561	50	900	<b>\$128.05</b>
2	03562	20	560	<b>159.85</b>
3	03563	10	180	<b>351.80</b>
4	03564	10	120	<b>693.15</b>



**Part No. PVC 502**  
**Combination Wye and 1/8 Bend,**  
**Reducing (One Piece)**  
(ALL HUB)

2x1½x1½	03565	5	720	<b>\$253.30</b>
2x2x1½	03567	20	980	<b>179.85</b>
3x3x1½	03568	15	420	<b>320.75</b>
3x3x2	03569	10	350	<b>240.35</b>
4x4x2	03570	5	175	<b>362.00</b>
4x4x3	03571	5	140	<b>467.00</b>
6x6x4	S	S	S	<b>S</b>

<sup>(F)</sup> Fabricated  
\* For pricing of this item, please see current PVC Large-Diameter DWV fitting list price schedule.

S See part no. PVC 504, 6x6x4 for information.

Size	UPC# 611942-	No. Per Carton	No. Per Pallet	List Price Each	Size	UPC# 611942-	No. Per Carton	No. Per Pallet	List Price Each
------	-----------------	-------------------	-------------------	--------------------	------	-----------------	-------------------	-------------------	--------------------



**Part No. PVC 503**  
**Combination Wye and 1/8 Bend**  
**(Two Piece)**  
(ALL HUB)

6**	03574	2	32	<b>\$2,668.50</b>
8 <sup>§</sup> **	03575	1	12	<b>4,026.85</b>
10 <sup>§</sup> **	10169	-	-	*
12 <sup>§</sup> **	10170	-	-	*
14 <sup>(F)</sup> ∞	12296	-	-	* <b>N</b>
16 <sup>(F)</sup> ∞	12297	-	-	* <b>N</b>



**Part No. PVC 504**  
**Combination Wye and 1/8 Bend,**  
**Reducing (Two Piece)**  
(ALL HUB)

6x6x3 <sup>§</sup>	03581	5	60	<b>\$2,807.40</b>
6x6x4 <sup>(1)</sup>	03582	5	60	<b>2,400.10</b>
8x8x4∞	03583	1	16	<b>2,433.85</b>
8x8x6 <sup>§</sup>	10171	1	16	<b>3,997.85</b>
10x10x4 <sup>§</sup>	10236	-	-	*
10x10x6 <sup>§</sup>	10238	-	-	*
10x10x8 <sup>§</sup>	10172	-	-	*
12x12x4 <sup>§</sup>	10237	-	-	*
12x12x6 <sup>§</sup>	10239	-	-	*
12x12x8 <sup>§</sup>	10173	-	-	*
12x12x10 <sup>§</sup>	10174	-	-	*
14x14x4 <sup>(F)</sup> ∞	12307	-	-	* <b>N</b>
14x14x6 <sup>(F)</sup> ∞	12303	-	-	* <b>N</b>
14x14x8 <sup>(F)</sup> ∞	12304	-	-	* <b>N</b>
14x14x10 <sup>(F)</sup> ∞	12306	-	-	* <b>N</b>
14x14x12 <sup>(F)</sup> ∞	12298	-	-	* <b>N</b>
16x16x4 <sup>(F)</sup> ∞	12301	-	-	* <b>N</b>
16x16x6 <sup>(F)</sup> ∞	12305	-	-	* <b>N</b>
16x16x8 <sup>(F)</sup> ∞	12302	-	-	* <b>N</b>
16x16x10 <sup>(F)</sup> ∞	12299	-	-	* <b>N</b>
16x16x12 <sup>(F)</sup> ∞	12300	-	-	* <b>N</b>
16x16x14 <sup>(F)</sup> ∞	12308	-	-	* <b>N</b>



**Part No. PVC 507**  
**Double Combination Wye and 1/8 Bend**  
**(ALL HUB)**  
(Three pieces or Five pieces)

2x2x1½x1½	03592	10	490	<b>\$626.55</b>
3x3x2x2	03594	10	180	<b>1,026.65</b>
3	03593	10	120	<b>994.00</b>
4	03595	5	60	<b>1,815.40</b>
4x4x2x2	03596	5	90	<b>1,977.85</b>
4x4x3x3	03597	5	80	<b>1,674.95</b>
6x6x4x4 <sup>§</sup>	10616	1	16	<b>4,439.20</b>



**Part No. PVC 515**  
**Combination Wye & 1/8 Bend**  
**(with Left Side Inlet)**  
(ALL HUB)

3x3x3x2	03603	10	180	<b>\$1,072.40</b>
---------	-------	----	-----	-------------------



**Part No. PVC 516**  
**Combination Wye & 1/8 Bend**  
**(with Right Side Inlet)**  
(ALL HUB)

3x3x3x2	03604	10	180	<b>\$1,072.40</b>
---------	-------	----	-----	-------------------



**Part No. PVC 517**  
**Combination Wye & 1/8 Bend**  
**(with Right & Left Side Inlet)**  
(ALL HUB)

3x3x3x2x2	03605	5	140	<b>\$1,606.75</b>
-----------	-------	---	-----	-------------------

- <sup>(1)</sup> One piece short pattern
- ∞ Fitting shipped with street bend strapped to fitting
- <sup>(F)</sup> Fabricated
- § Fitting shipped with any required bushing(s) installed, street 1/8 bend strapped to fitting; assembled from molded components.
- \* For pricing of this item, please see current PVC Large-Diameter DWV fitting list price schedule.
- \*\* Assembled from two molded components

**Note: N = non-stock item – contact customer service for availability.**

Size	UPC# 611942-	No. Per Carton	No. Per Pallet	List Price Each	Size	UPC# 611942-	No. Per Carton	No. Per Pallet	List Price Each
------	-----------------	-------------------	-------------------	--------------------	------	-----------------	-------------------	-------------------	--------------------



**Part No. PVC 600  
Wye  
(ALL HUB)**

1¼	03606	35	1715	<b>\$144.20</b>
1½	03607	50	1400	<b>96.25</b>
2	03608	25	700	<b>94.75</b>
3	03609	25	300	<b>256.20</b>
4	03610	5	140	<b>464.65</b>
6	03611	4	48	<b>1,341.35</b>
8	03612	1	16	<b>2,364.90</b>
10	10017	-	-	*
12	10023	-	-	*
14 <sup>(F)</sup>	12314	-	-	*
16 <sup>(F)</sup>	12309	-	-	*



**Part No. PVC 601  
Wye, Reducing  
(ALL HUB)**

2x1½x1½	03615	25	1225	<b>\$132.45</b>
2x1½x2	03616	10	800	<b>205.05</b>
2x2x1½	03617	25	875	<b>115.85</b>
3x3x1½	03618	15	525	<b>171.30</b>
3x3x2	03619	25	400	<b>189.40</b>
4x4x1½	03620	5	175	<b>592.50</b>
4x4x2	03621	10	180	<b>278.15</b>
4x4x3	03622	10	160	<b>377.20</b>
6x6x3	03623	5	60	<b>1,303.20</b>
6x6x4	03624	5	60	<b>1,083.10</b>
8x8x4	10617	2	32	<b>2,283.60</b>
8x8x6	03625	1	16	<b>2,354.70</b>
10x10x4**	10240	-	-	*
10x10x6**	10241	-	-	*
10x10x8	10022	-	-	*
12x12x4**	10242	-	-	*
12x12x6**	10243	-	-	*
12x12x8	10030	-	-	*
12x12x10	10029	-	-	*
14x14x4 <sup>(F)</sup>	12315	-	-	* <b>N</b>
14x14x6 <sup>(F)</sup>	12316	-	-	*
14x14x8 <sup>(F)</sup>	12317	-	-	*
14x14x10 <sup>(F)</sup>	12318	-	-	*
14x14x12 <sup>(F)</sup>	12319	-	-	*
16x16x4 <sup>(F)</sup>	12311	-	-	*
16x16x6 <sup>(F)</sup>	12312	-	-	*
16x16x8 <sup>(F)</sup>	12313	-	-	*
16x16x10 <sup>(F)</sup>	12310	-	-	*
16x16x12 <sup>(F)</sup>	12320	-	-	*
16x16x14 <sup>(F)</sup>	12321	-	-	*

**⚠ WARNING**

Testing with or use of compressed air or gas in ABS / CPVC / PVC pipe or fittings can result in explosive failures and cause severe injury or death.

AIR/GAS

- NEVER test with or transport/store compressed air or gas in ABS / CPVC / PVC pipe or fittings.
- NEVER test ABS / CPVC / PVC pipe or fittings with compressed air or gas, or air over water boosters.
- ONLY use ABS / CPVC / PVC pipe or fittings for water or approved chemicals.
- Refer to warnings on PFFA's website and ASTM D 1785.

<sup>(F)</sup> Fabricated  
\* For pricing of this item, please see current PVC Large-Diameter DWV fitting list price schedule.  
\*\* Assembled from two molded components

**Note: N = non-stock item – contact customer service for availability.**

Size	UPC# 611942-	No. Per Carton	No. Per Pallet	List Price Each	Size	UPC# 611942-	No. Per Carton	No. Per Pallet	List Price Each
------	-----------------	-------------------	-------------------	--------------------	------	-----------------	-------------------	-------------------	--------------------



**Part No. PVC 602**  
**Wye, Street**  
(SPG x H x H)

1½	03629	50	1750	<b>\$178.25</b>
2	03630	25	700	<b>171.00</b>
3	03631	10	280	<b>372.05</b>
4	03632	10	120	<b>761.80</b>



**Part No. PVC 603**  
**Wye, Street, Reducing**  
(SPG x H x H)

3x3x1½	03633	20	360	<b>\$431.35</b>
3x3x2	03634	30	480	<b>292.50</b>
4x4x2	03635	10	180	<b>869.70</b>
4x4x3	03636	10	160	<b>810.40</b>



**Part No. PVC 611**  
**Double Wye**  
(ALL HUB)

1½	03637	25	875	<b>\$216.40</b>
2	03638	20	560	<b>256.85</b>
3	03639	15	180	<b>502.25</b>
4	03640	5	80	<b>1,082.35</b>
6	03641	2	24	<b>2,023.35</b>
8 <sup>(F)</sup>	12323	-	-	<b>9,032.10</b>
10 <sup>(F)</sup>	12324	-	-	*
12 <sup>(F)</sup>	12325	-	-	*
14 <sup>(F)</sup>	12326	-	-	*



**Part No. PVC 611 S**  
**Double Wye with 2'' Side Inlet**  
(ALL HUB)

3	04891	10	160	<b>\$3,084.15</b>
---	-------	----	-----	-------------------

- <sup>(F)</sup> Fabricated  
\* For pricing of this item, please see current PVC Large-Diameter DWV fitting list price schedule.  
\*\* Assembled from two molded components

**Note: N = non-stock item – contact customer service for availability.**



**Part No. PVC 612**  
**Double Wye, Reducing**  
(ALL HUB)

2x2x1½x1½	03643	10	560	<b>\$220.65</b>
3x3x1½x1½	03644	10	350	<b>459.85</b>
3x3x2x2	03645	8	224	<b>374.30</b>
4x4x2x2	03646	5	175	<b>610.90</b>
4x4x3x3	03647	5	90	<b>806.85</b>
6x6x4x4**	10615	1	16	<b>2,831.05</b>
8x8x4x4 <sup>(F)</sup>	12327	1	16	<b>5,349.15</b>
8x8x6x6 <sup>(F)</sup>	12328	2	8	<b>6,392.50</b>
10x10x4x4 <sup>(F)</sup>	12329	-	-	* <b>N</b>
10x10x6x6 <sup>(F)</sup>	12330	-	-	*
10x10x8x8 <sup>(F)</sup>	12331	-	-	*
12x12x4x4 <sup>(F)</sup>	12332	-	-	* <b>N</b>
12x12x6x6 <sup>(F)</sup>	12333	-	-	* <b>N</b>
12x12x8x8 <sup>(F)</sup>	12334	-	-	*
12x12x10x10 <sup>(F)</sup>	12335	-	-	*
14x14x6x6 <sup>(F)</sup>	12337	-	-	*
14x14x8x8 <sup>(F)</sup>	12338	-	-	* <b>N</b>
14x14x10x10 <sup>(F)</sup>	12339	-	-	*
14x14x12x12 <sup>(F)</sup>	12340	-	-	* <b>N</b>
16x16x6x6 <sup>(F)</sup>	12341	-	-	* <b>N</b>
16x16x8x8 <sup>(F)</sup>	12343	-	-	* <b>N</b>
16x16x10x10 <sup>(F)</sup>	12344	-	-	* <b>N</b>
16x16x12x12 <sup>(F)</sup>	12345	-	-	* <b>N</b>
16x16x14x14 <sup>(F)</sup>	12346	-	-	* <b>N</b>



**Part No. PVC 625**  
**Wye with Left Side Inlet**  
(ALL HUB)

3x3x3x2	03650	5	175	<b>\$1,268.65</b>
4x4x4x2	04404	5	90	<b>1,641.55</b>



**Part No. PVC 626**  
**Wye with Right Side Inlet**  
(ALL HUB)

3x3x3x2	03651	5	175	<b>\$1,268.65</b>
4x4x4x2	04405	5	90	<b>1,641.55</b>

Size	UPC# 611942-	No. Per Carton	No. Per Pallet	List Price Each	Size	UPC# 611942-	No. Per Carton	No. Per Pallet	List Price Each
------	-----------------	-------------------	-------------------	--------------------	------	-----------------	-------------------	-------------------	--------------------



**Part No. PVC 700  
Return Bend  
(H x H)**

1½	03653	20	1600	<b>\$96.05</b>
2	03654	35	630	<b>182.35</b>
3	03655	10	280	<b>511.80</b>
4	03656	5	140	<b>929.45</b>



**Part No. PVC 706 X  
P-Trap  
(H x H)**

1½	03668	25	1225	<b>\$112.20</b>
2	03669	20	560	<b>136.70</b>
3	03670	10	180	<b>461.80</b>
4	03671	4	72	<b>1,111.90</b>
6	17111	2	24	<b>2,499.35</b>



**Part No. PVC 707 X  
P-Trap with Cleanout  
(H x H)**

1½	03676	10	800	<b>\$171.65</b>
2	03677	10	490	<b>298.60</b>



**Part No. PVC 708 P  
P-Trap  
(H x H with Plastic Nut)**

1¼	03680	25	1225	<b>\$960.15</b>
1½	03681	20	980	<b>133.75</b>
2	03682	15	420	<b>308.25</b>



**Part No. PVC 708 X  
P-Trap  
(H x H with Chrome Nut)**

1½	03683	25	875	<b>\$198.40</b>
----	-------	----	-----	-----------------



**Part No. PVC 709 X  
P-Trap w/Cleanout  
(H x H with Chrome Nut)**

1½	03688	10	800	<b>\$662.55</b>
----	-------	----	-----	-----------------

Note: Shading indicates new part.



**Part No. PVC 710  
Low Profile P-Trap with Solvent Weld  
(H x H)**

2	13343	20	560	<b>\$162.00</b>
---	-------	----	-----	-----------------



**Part No. PVC 711 P  
L.A. Pattern P-Trap with  
Polyethylene Nut**  
Furnished with 1½" and 1½" x 1¼"  
Polyethylene nut/washer combination.  
(SLIP x H)

1½	03694	25	700	<b>\$231.35</b>
----	-------	----	-----	-----------------



**Part No. PVC 711 W  
L.A. Pattern P-Trap with PVC Nut**  
Furnished with a 1½" PVC nut, a 1½" washer  
and a 1½" x 1¼" washer  
(SLIP with Union x H)

1½	13288	25	700	<b>\$262.75</b>
----	-------	----	-----	-----------------



**Part No. PVC 711 X  
L.A. Pattern P-Trap with Chrome Nut**  
Furnished with a 1½" Chrome nut, a 1½" washer  
and a 1½" x 1¼" washer  
(SLIP X H with Chrome Nut)

1½	03695	25	875	<b>\$352.80</b>
----	-------	----	-----	-----------------



**Part No. PVC 720 X  
Drum Trap  
(H x H)**

3x6x1½	03701	15	420	<b>\$439.85</b>
--------	-------	----	-----	-----------------



**Part No. PVC 800  
Closet Flange  
(H)**

4x3 <sup>(01)</sup>	03703	25	700	<b>\$126.55</b>
4x4	03704	25	700	<b>177.75</b>

<sup>(01)</sup> Fits over 3" pipe or inside 4" pipe.

Size	UPC# 611942-	No. Per Carton	No. Per Pallet	List Price Each	Size	UPC# 611942-	No. Per Carton	No. Per Pallet	List Price Each
	<b>Part No. PVC 800 K Closet Flange with Knock Out (H)</b>					<b>Part No. PVC 812 P Closet Flange, Adjustable (with PVC Plastic Ring) (SPG)</b>			
4x3 <sup>(01)</sup>	03705	25	700	\$145.70	4x3	10186	25	875	\$552.55
4x4	03706	25	700	261.05	4x4	10187	25	700	647.00
	<b>Part No. PVC 800 S Closet Flange with Stop (H)</b>					<b>Part No. PVC 815 Flush Closet Flange (Fits Over 3" Pipe or Inside 4" Pipe) (H)</b>			
4x3 <sup>(01)</sup>	04944	25	700	\$189.40	4x3 <sup>(01)</sup>	03718	25	875	\$229.45
	<b>Part No. PVC 801 Closet Flange, Reducing (SPG)</b>					<b>Part No. PVC 815 K Flush Closet Flange with Knock Out (Fits Over 3" Pipe or Inside 4" Pipe) (H)</b>			
4x3	03707	25	875	\$171.20	4x3 <sup>(01)</sup>	03719	20	700	\$233.00
	<b>Part No. PVC 810 K Closet Flange, Adjustable (with PVC Plastic Ring) with Knock Out (H)</b>					<b>Part No. PVC 820 Offset Closet Flange, Adjustable (with Metal Ring) (1 1/2" Offset) (H)</b>			
4x3 <sup>(01)</sup>	10185	25	700	\$874.30	4x3 <sup>(01)</sup>	03720	15	525	\$468.95
	<b>Part No. PVC 811 Closet Flange, Adjustable (with Metal Ring) (H)</b>					<b>Part No. PVC 820 P Closet Flange, Adjustable (with PVC Plastic Ring) (1 1/2" Offset) (H)</b>			
4x3 <sup>(01)</sup>	03710	25	700	\$393.60	4x3 <sup>(01)</sup>	10188	15	525	\$638.75
4x4	03711	25	700	408.45		<b>Part No. PVC 900 Swivel Tray Plug Adapter with Washer (SPGxFPT)</b>			
	<b>Part No. PVC 811 K Closet Flange, Adjustable (with Metal Ring ) with Knock Out (H)</b>				1 1/2	14222	30	4320	\$124.40
4x3 <sup>(01)</sup>	04913	25	700	\$585.55					
	<b>Part No. PVC 812 Closet Flange, Adjustable (with Metal Ring) (SPG)</b>								
4x3	03714	25	875	\$327.40					
4x4	03715	25	700	459.00					

<sup>(01)</sup> Fits over 3" pipe or inside 4" pipe.

## TERMS AND CONDITIONS OF SALE

Terms and Conditions of Sale can be found at [https://charlottepipe.com/terms\\_and\\_conditions.aspx](https://charlottepipe.com/terms_and_conditions.aspx)

### LIMITED WARRANTY

Charlotte Pipe and Foundry Company® (Charlotte Pipe®) Products are warranted to be free from manufacturing defects and to conform to currently applicable ASTM standards for a period of five (5) years from date of delivery. Buyer's remedy for breach of this warranty is limited to replacement of, or credit for, the defective product. This warranty excludes any expense for removal or reinstallation of any product and any other incidental, consequential, or punitive damages. **This limited warranty is the only warranty made by seller and is expressly in lieu of all other warranties, express and implied, including any warranties of merchantability and fitness for a particular purpose.** No statement, conduct or description by Charlotte Pipe or its representative, in addition to or beyond this Limited Warranty, shall constitute a warranty. This Limited Warranty may only be modified in writing signed by an officer of Charlotte Pipe.

This Limited Warranty will not apply if:

- 1) The Products are used for purposes other than their intended purpose as defined by local plumbing and building codes, and the applicable ASTM standard.
- 2) The Products are not installed in good and workmanlike manner consistent with normal industry standards; installed in compliance with the latest instructions published by Charlotte Pipe and good plumbing practices; and installed in conformance with all applicable plumbing, fire and building code requirements.
- 3) This limited warranty does not apply when the products of Charlotte Pipe are used with the products of other manufacturers that do not meet the applicable ASTM or CISPI standards or that are not marked in a manner to indicate the entity that manufactured them.
- 4) In hubless cast iron installations, this warranty will not apply if products are joined with unshielded hubless couplings. Charlotte Pipe requires that its hubless cast iron pipe and fittings be joined only with shielded hubless couplings manufactured in accordance with CISPI 310, ASTM C 1277 and certified by NSF® International or with Heavy Duty Couplings meeting ASTM C 1540.
- 5) The Products fail due to defects or deficiencies in design, engineering, or installation of the piping system of which they are a part.
- 6) The Products have been the subject of modification; misuse; misapplication; improper maintenance or repair; damage caused by the fault or negligence of anyone other than Charlotte Pipe; or any other act or event beyond the control of Charlotte Pipe.
- 7) The Products fail due to the freezing of water in the Products.
- 8) The Products fail due to contact with chemical agents, fire stopping materials, thread sealant, plasticized vinyl products, or other aggressive chemical agents that are not compatible.
- 9) Pipe outlets, sound attenuation systems or other devices are permanently attached to the surface of Charlotte® PVC, ABS or CPVC products with solvent cement or adhesive glue.

Charlotte Pipe products are manufactured to the applicable ASTM or CISPI standard. Charlotte Pipe and Foundry **cannot** accept responsibility for the performance, dimensional accuracy, or compatibility of pipe, fittings, gaskets, or couplings not manufactured or sold by Charlotte Pipe and Foundry.

This Limited Warranty will not apply unless written notice of a claim is mailed to Charlotte Pipe at the address below within 30 days of discovery of the allegedly defective product.

Any Charlotte Pipe products alleged to be defective **must** be made available to Charlotte Pipe at the following address for verification, inspection and determination of cause:

Charlotte Pipe and Foundry Company  
Attention: Technical Services  
2109 Randolph Road  
Charlotte, North Carolina 28207

**Purchaser must obtain a return materials authorization** and instructions for return shipment to Charlotte Pipe of any product claimed defective or shipped in error.

Any Charlotte Pipe product **proved** to be defective in manufacture will be replaced F.O.B. point of original delivery, or credit will be issued, at the discretion of Charlotte Pipe.

5/19/23

Charlotte, Charlotte Pipe and "You can't beat the system" are registered trademarks of Charlotte Pipe and Foundry Company.